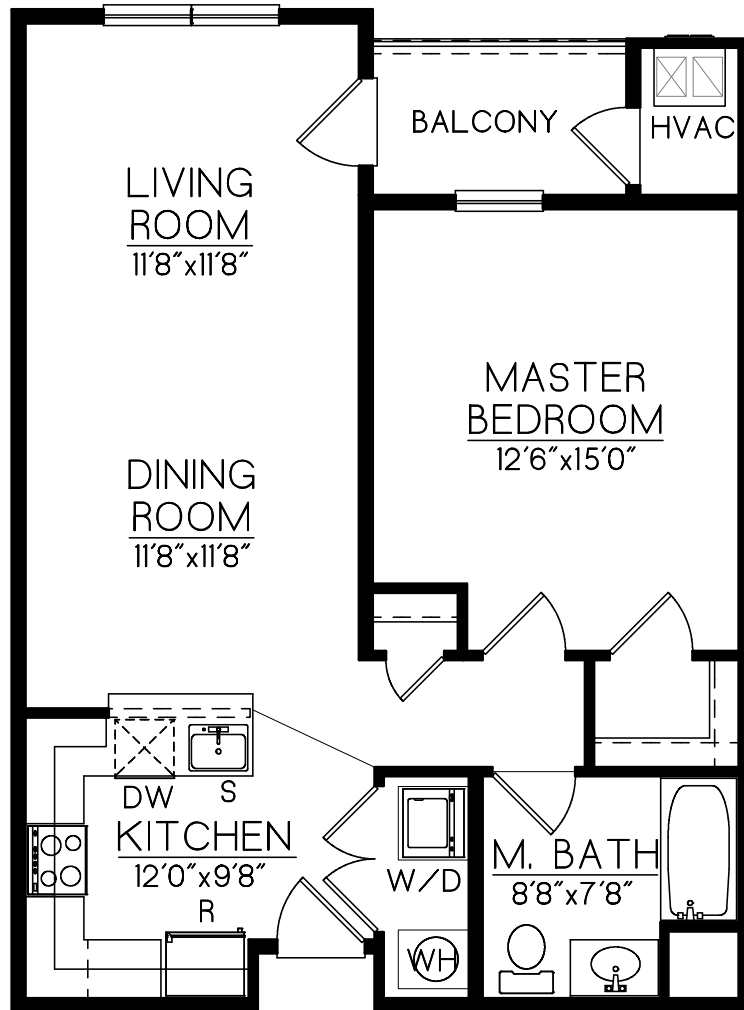




RIVERGATE
BORDENTOWN WATERFRONT



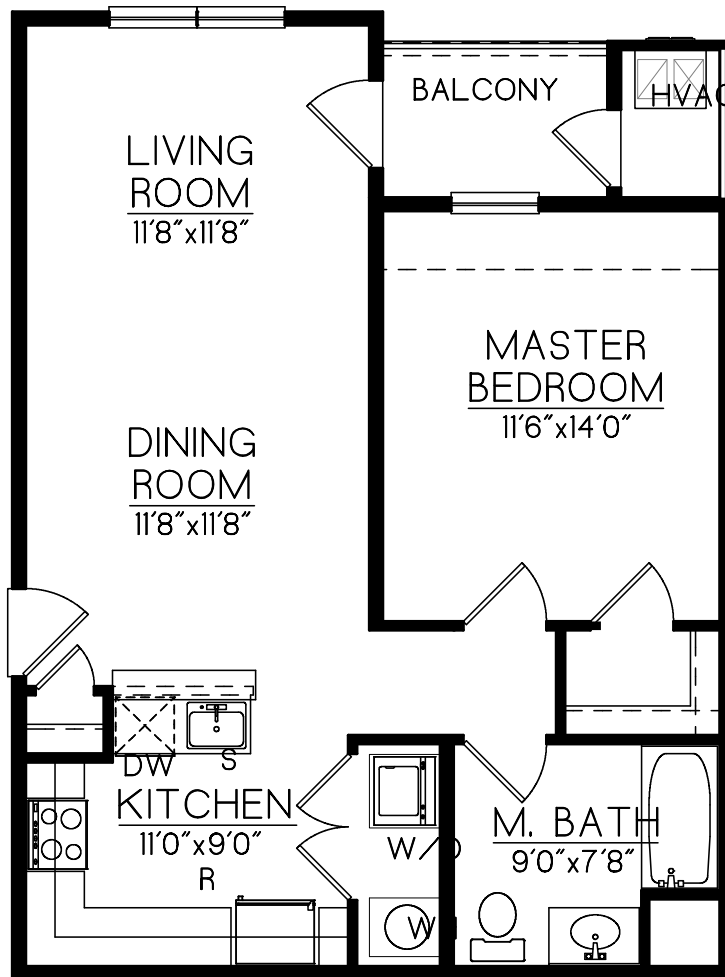
1B - THE BORDEN | 773 Sq. Ft. | 1 Bedroom | 1 Bath | Balcony



In an effort to continually improve our product, the developer reserves the right to change specifications and prices without notice. All renderings, floor plans and maps are artist's conceptions and are not intended to be an exact depiction of either the dwellings or landscape. Room dimensions are approximate. Special wall and window treatments, upgraded floor coverings and many other features in the model homes are decorator suggested and not included in the purchase price.



1B2 - THE RIVERGATE | 737 Sq. Ft. | 1 Bedroom | 1 bath | Balcony

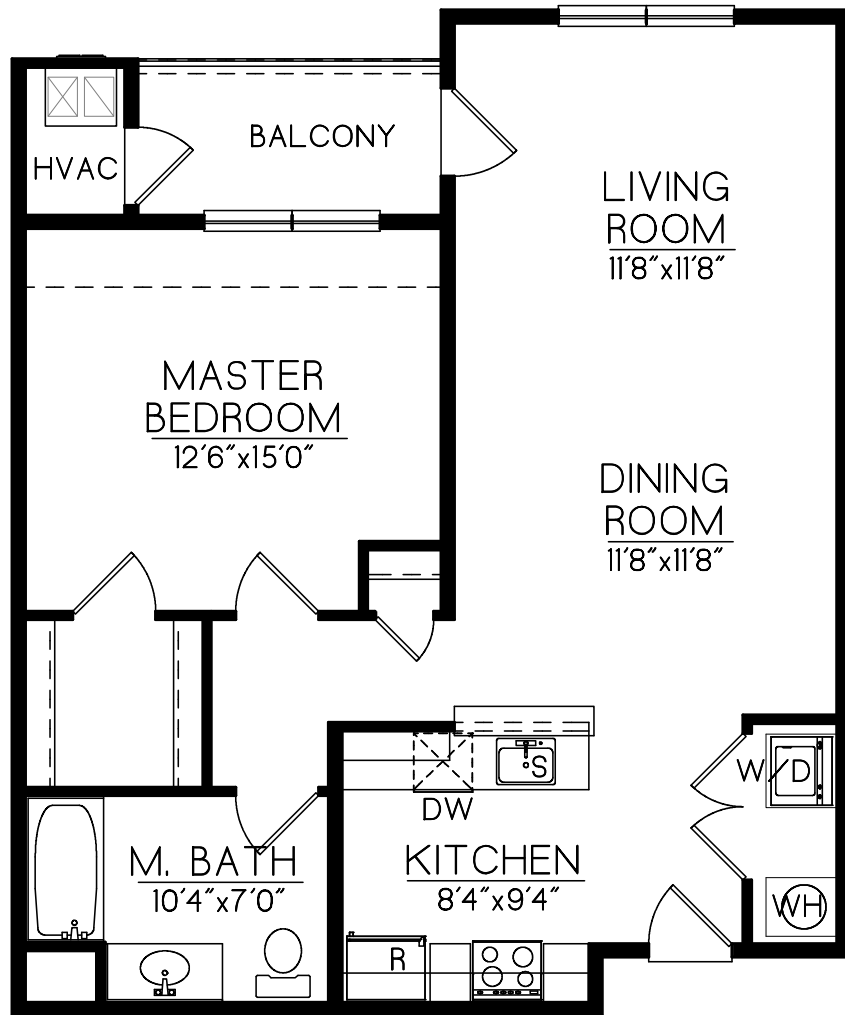


In an effort to continually improve our product, the developer reserves the right to change specifications and prices without notice. All renderings, floor plans and maps are artist's conceptions and are not intended to be an exact depiction of either the dwellings or landscape. Room dimensions are approximate. Special wall and window treatments, upgraded floor coverings and many other features in the model homes are decorator suggested and not included in the purchase price.



EQUAL HOUSING OPPORTUNITY

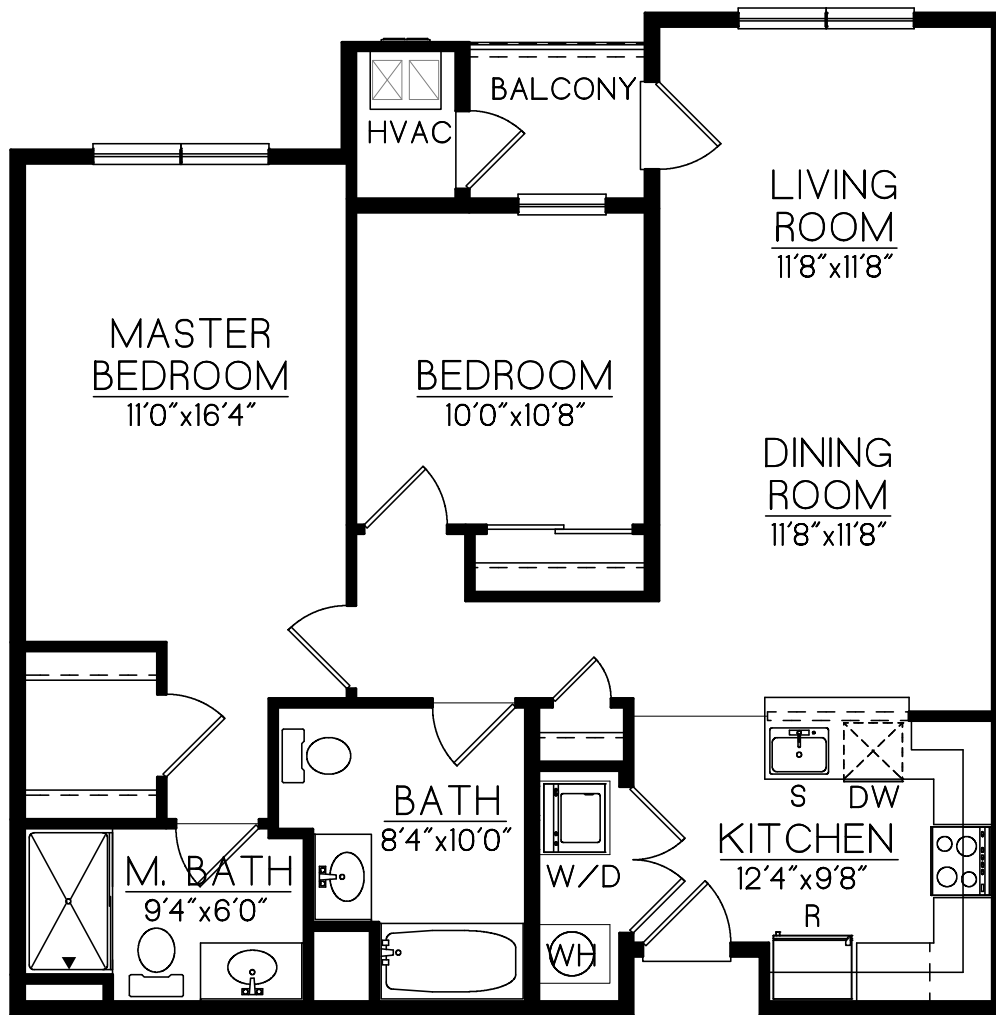
1B3 - THE WRIGHT | 863 Sq. Ft. | 1 Bedroom | 1 Bath | Balcony



In an effort to continually improve our product, the developer reserves the right to change specifications and prices without notice. All renderings, floor plans and maps are artist's conceptions and are not intended to be an exact depiction of either the dwellings or landscape. Room dimensions are approximate. Special wall and window treatments, upgraded floor coverings and many other features in the model homes are decorator suggested and not included in the purchase price.



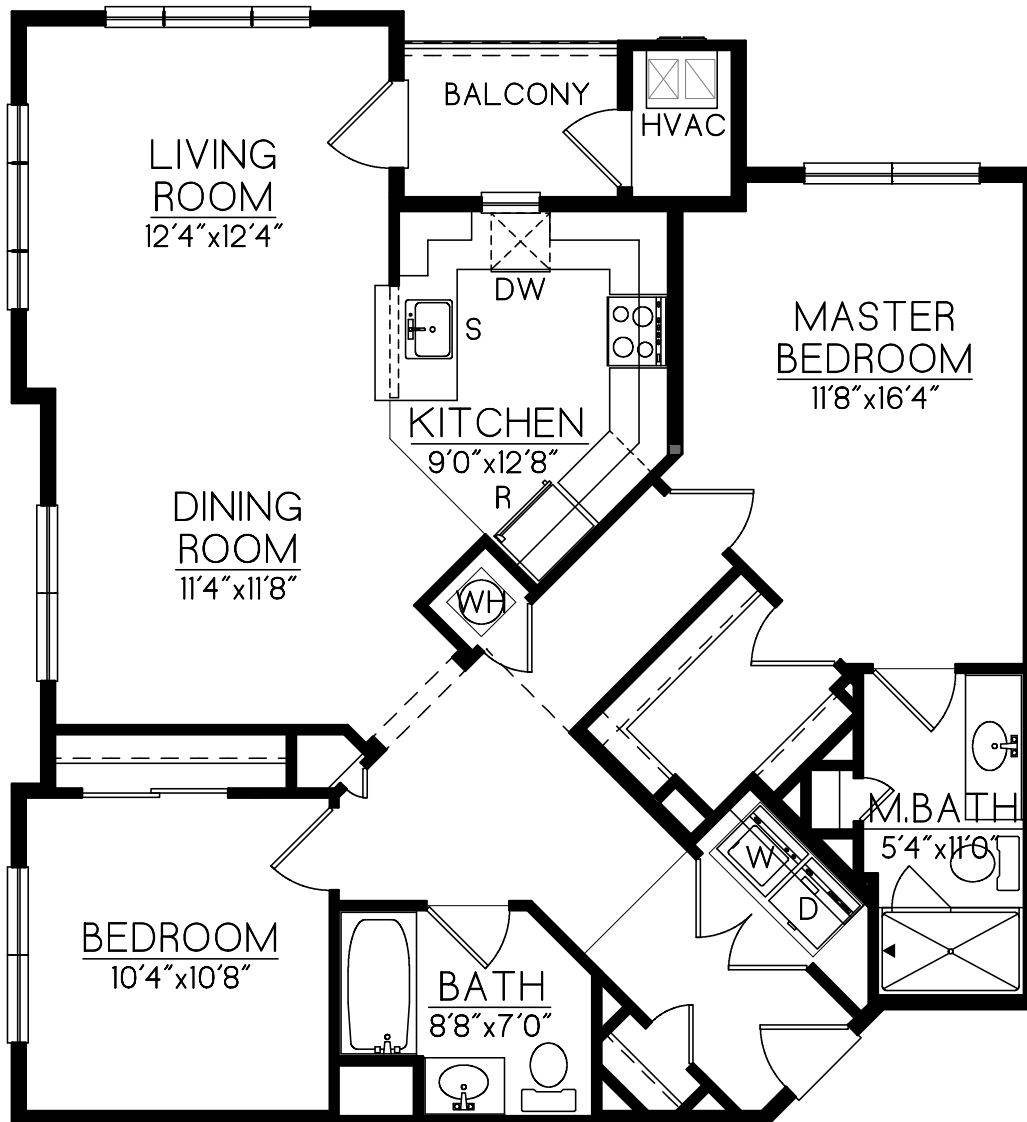
2B - THE CHESTER | 1,033 Sq. Ft. | 2 Bedrooms | 2 Baths | Balcony



In an effort to continually improve our product, the developer reserves the right to change specifications and prices without notice. All renderings, floor plans and maps are artist's conceptions and are not intended to be an exact depiction of either the dwellings or landscape. Room dimensions are approximate. Special wall and window treatments, upgraded floor coverings and many other features in the model homes are decorator suggested and not included in the purchase price.



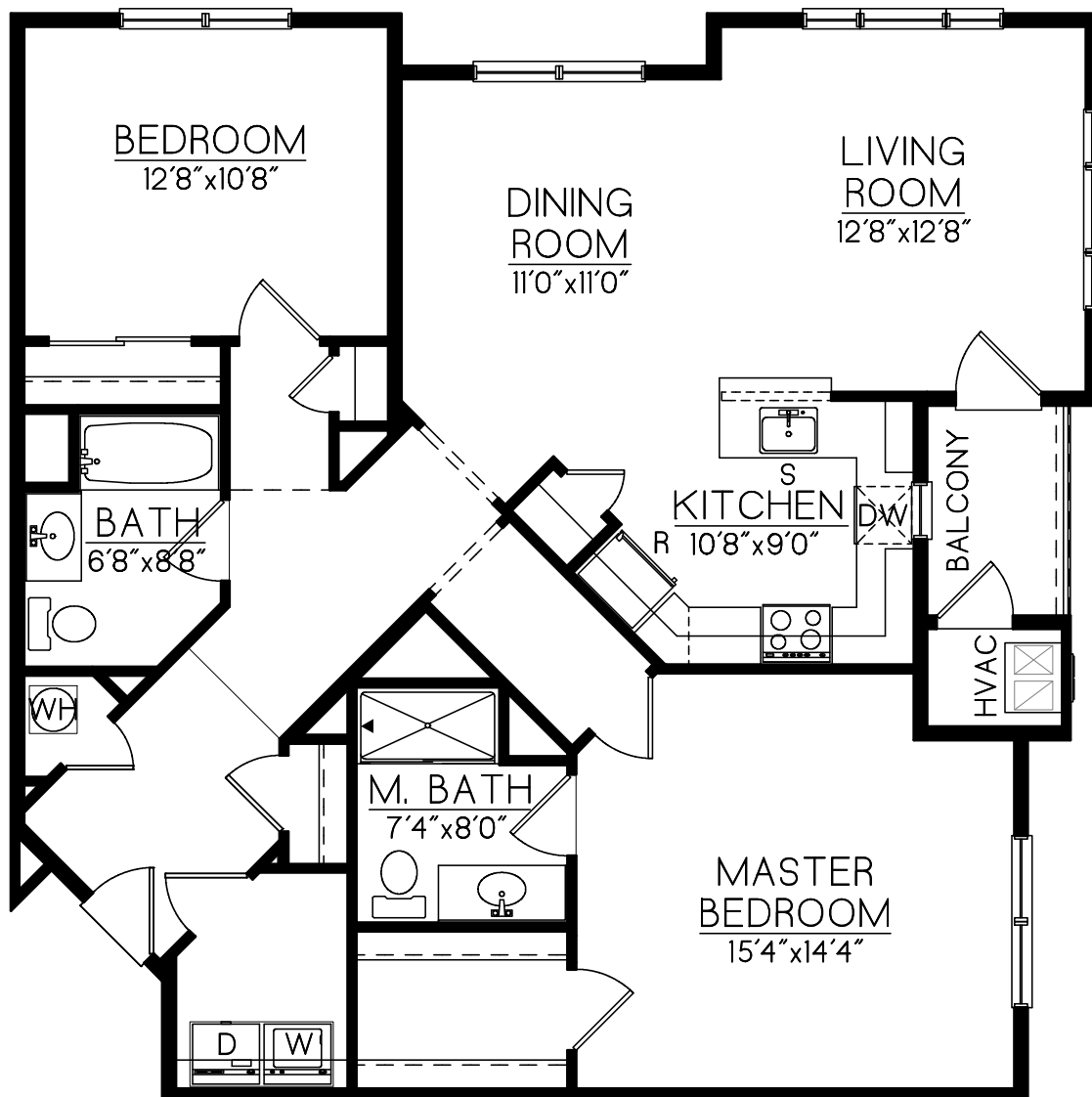
2B2 - THE DAYTON | 1,160 Sq. Ft. | 2 Bedrooms | 2 baths | Balcony



In an effort to continually improve our product, the developer reserves the right to change specifications and prices without notice. All renderings, floor plans and maps are artist's conceptions and are not intended to be an exact depiction of either the dwellings or landscape. Room dimensions are approximate. Special wall and window treatments, upgraded floor coverings and many other features in the model homes are decorator suggested and not included in the purchase price.



2B3 - THE EDISON | 1,287 Sq. Ft. | 2 Bedrooms | 2 baths | Balcony



In an effort to continually improve our product, the developer reserves the right to change specifications and prices without notice. All renderings, floor plans and maps are artist's conceptions and are not intended to be an exact depiction of either the dwellings or landscape. Room dimensions are approximate. Special wall and window treatments, upgraded floor coverings and many other features in the model homes are decorator suggested and not included in the purchase price.



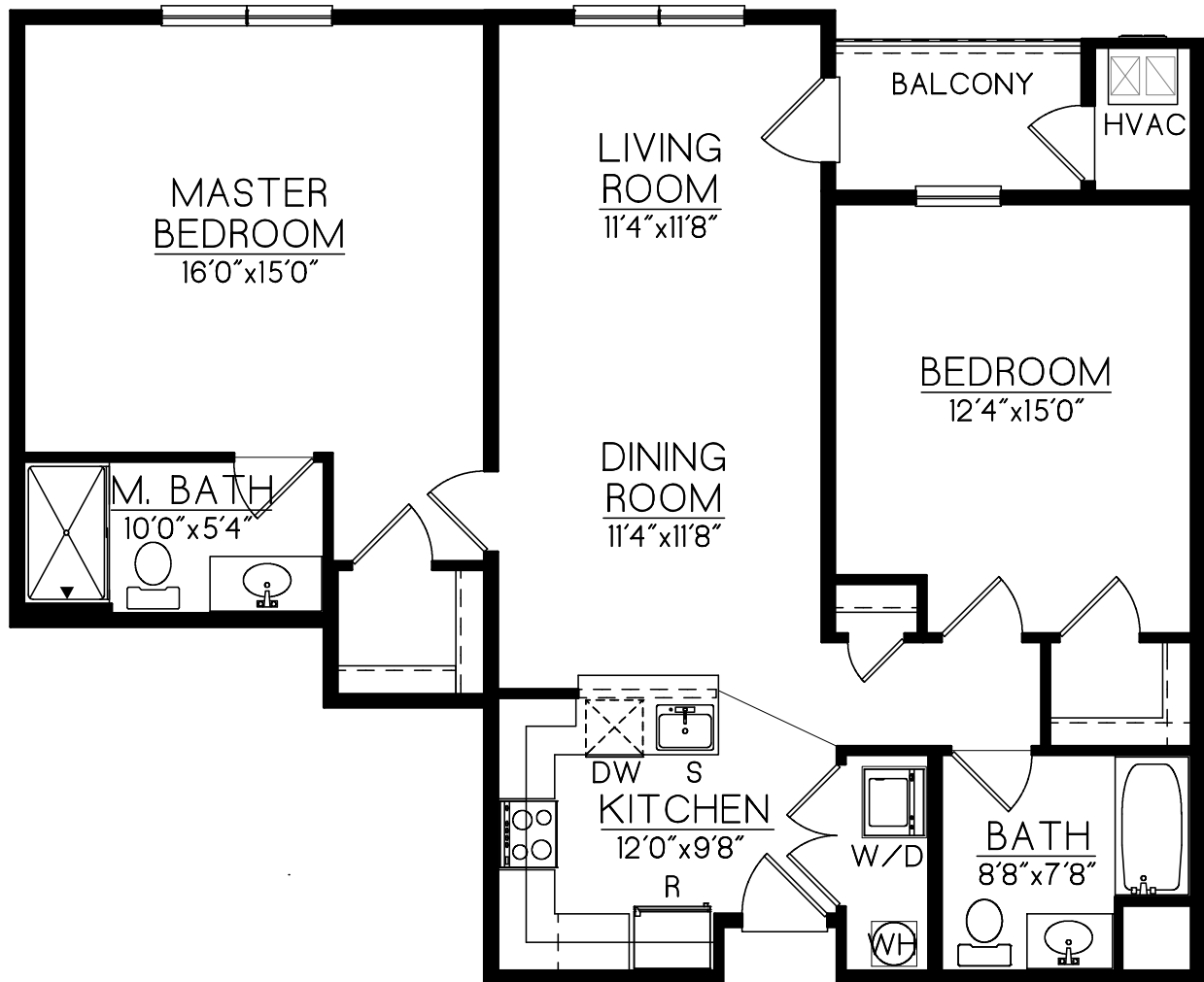
2B4 - THE BURLINGTON | 1,043 Sq. Ft. | 2 Bedrooms | 2 baths | Balcony



In an effort to continually improve our product, the developer reserves the right to change specifications and prices without notice. All renderings, floor plans and maps are artist's conceptions and are not intended to be an exact depiction of either the dwellings or landscape. Room dimensions are approximate. Special wall and window treatments, upgraded floor coverings and many other features in the model homes are decorator suggested and not included in the purchase price.



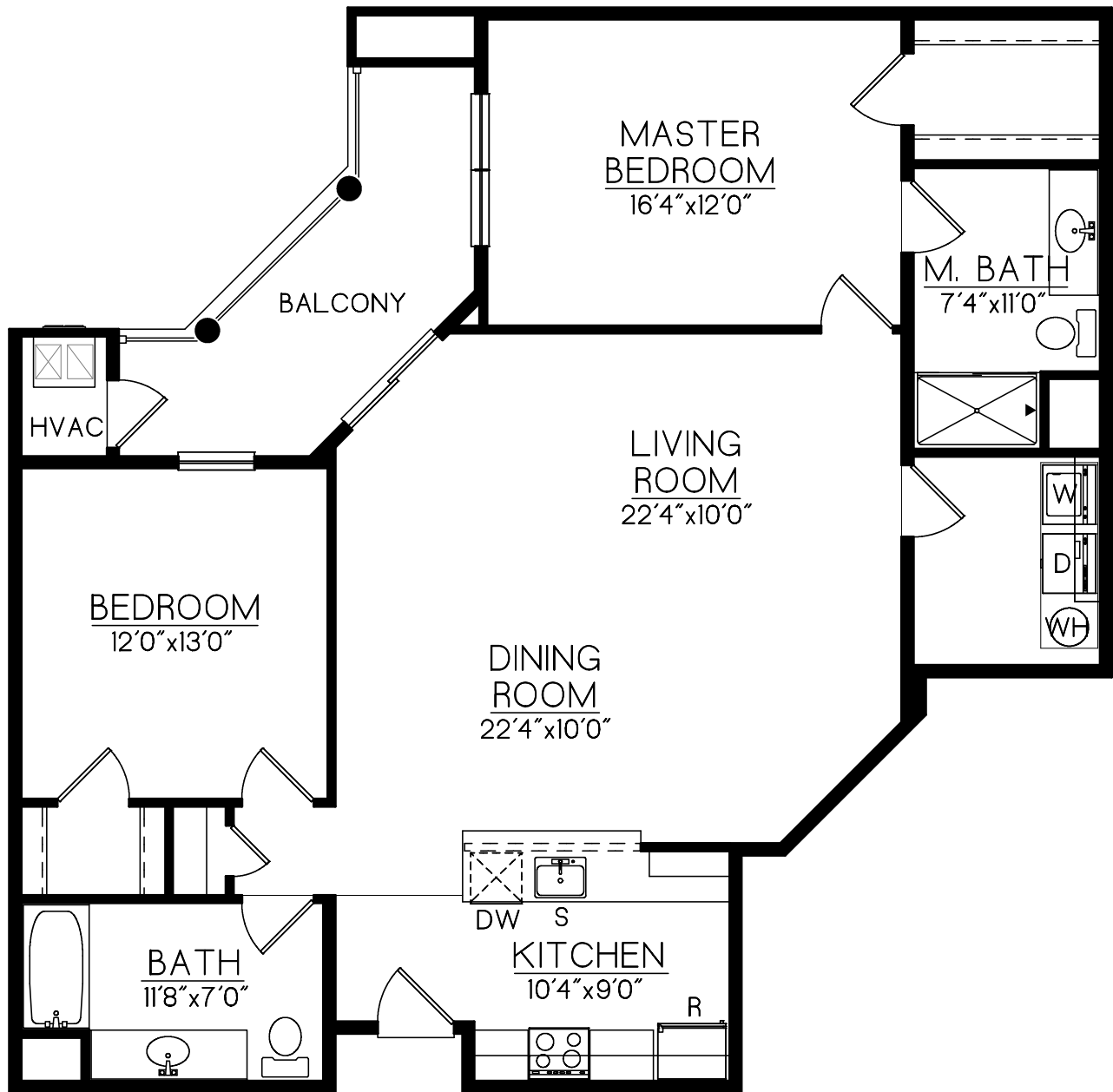
2B5 - THE FARNSWORTH | 1,149 Sq. Ft. | 2 Bedrooms | 2 Baths | Balcony



In an effort to continually improve our product, the developer reserves the right to change specifications and prices without notice. All renderings, floor plans and maps are artist's conceptions and are not intended to be an exact depiction of either the dwellings or landscape. Room dimensions are approximate. Special wall and window treatments, upgraded floor coverings and many other features in the model homes are decorator suggested and not included in the purchase price.



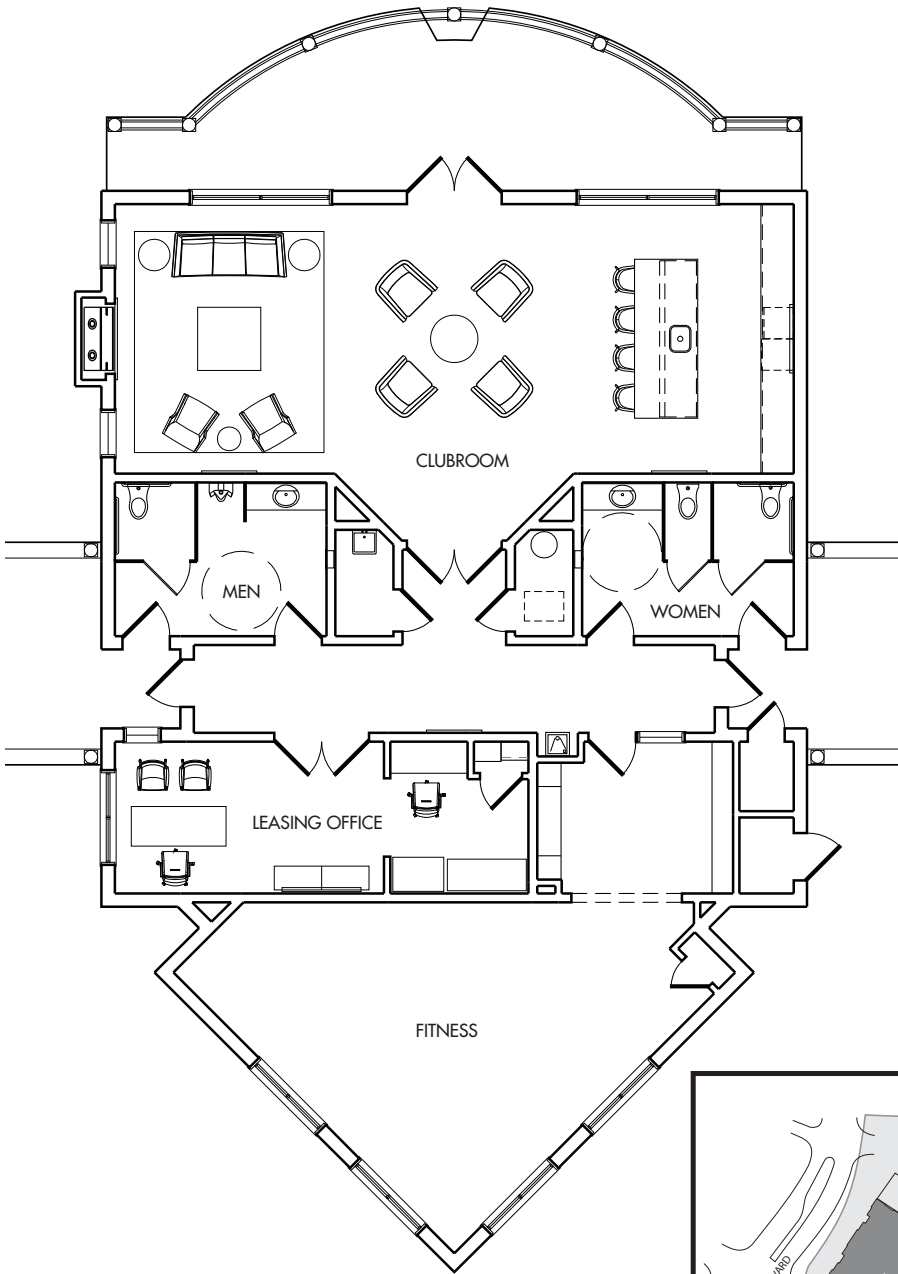
2B6 - THE HAMILTON | 1,342 Sq. Ft. | 2 Bedrooms | 2 Baths | Balcony



In an effort to continually improve our product, the developer reserves the right to change specifications and prices without notice. All renderings, floor plans and maps are artist's conceptions and are not intended to be an exact depiction of either the dwellings or landscape. Room dimensions are approximate. Special wall and window treatments, upgraded floor coverings and many other features in the model homes are decorator suggested and not included in the purchase price.

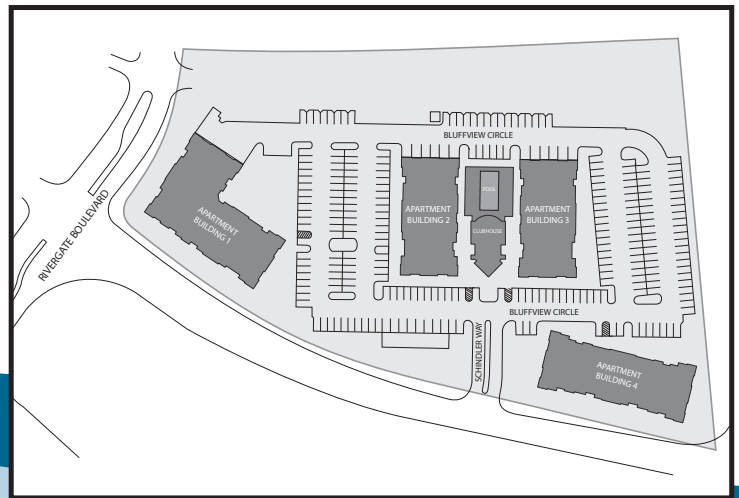


RIVERGATE CLUBHOUSE



At the heart of Rivergate Bordentown is an exclusive clubhouse that will serve as the community's primary hub of activity. You'll love socializing with friends and neighbors over a game of cards or planning special activities throughout the year in our Residents Clubroom. Featuring a resort-style heated outdoor pool for your summertime enjoyment and a state-of-the-art fitness studio to keep you active and fit year round, the Rivergate clubhouse sets a new standard for rental residences.

 **RIVERGATE**
BORDENTOWN WATERFRONT



In an effort to continually improve our product, the developer reserves the right to change specifications and prices without notice. All renderings, floor plans and maps are artist's conceptions and are not intended to be an exact depiction of either the dwellings or landscape. Room dimensions are approximate. Special wall and window treatments, upgraded floor coverings and many other features in the model homes are decorator suggested and not included in the purchase price.



FEATURES

COMMUNITY HIGHLIGHTS

- Rivergate Clubhouse appointed with Clubroom, Fitness Studio and Outdoor Heated Pool
- Outdoor Barbecue
- Professionally Landscaped and Irrigated Grounds
- Secured Building Entrances
- Free Standing Secured Garages (in select locations)

LOCATION HIGHLIGHTS

- Accessible to the River Line Light Rail, Routes I-295, I-195, 130, 206 and the NJ Turnpike
- Accessible to Philadelphia, the Jersey Shore and Princeton
- Convenience to Shopping
- Close proximity to Downtown Boutiques, Restaurants, Cafes and Galleries
- Shopping in Hamilton Marketplace, Bordentown City, the Shoppes at Hamilton, and the Quaker Bridge Mall
- Golf enjoyment at Old York Country Club Cream Ridge and Rancocas

RESIDENCE HIGHLIGHTS

- Well-Appointed One and Two Bedroom Residences
- Designer Kitchens featuring Shaker Style Wood Espresso Cabinets with Quartz Countertop, Stainless Steel Self-Cleaning Range with Microwave, Dishwasher and Refrigerator with ice-maker hook-up
- Kitchens with Stainless Steel Sink and Kohler Single-lever Faucet
- Washer and Dryer
- Plush Carpeting
- Individual Controls for Gas Heating and Central Air-Conditioning
- Private Balcony
- 9' Ceilings
- Mini Blinds
- Storage
- Pre-Wired for Cable TV, Telephone and High Speed Internet Access
- Designer Bathroom Vanity
- Cultured Marble Countertop
- Single Lever Kohler Faucet
- Ceramic Tile Floor

PHONE: 609.298.0303

| RIVERGATEBORDENTOWN.COM



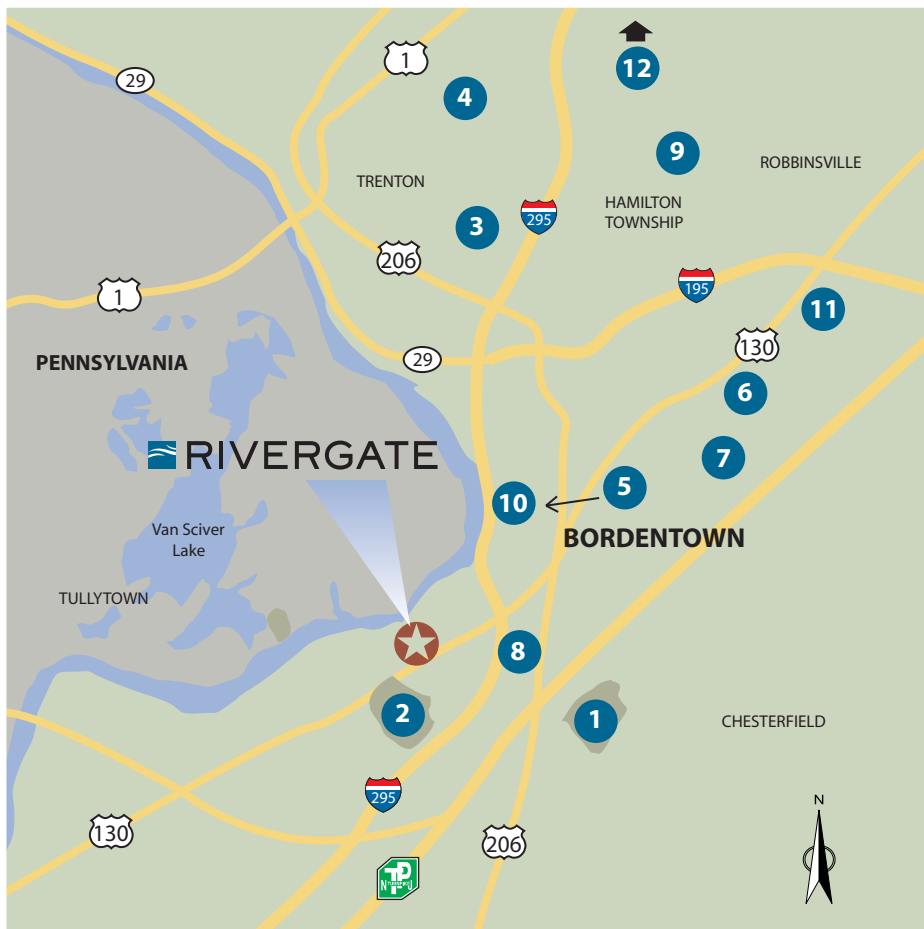
EQUAL HOUSING
OPPORTUNITY

DIRECTIONS:

FROM PRINCETON/TRENTON: Take I-295 S to Exit 57A-57B Bordertown/Burlington. Take Exit 57B to merge onto Route 130 South toward Burlington. Take 130 South to the second traffic light and turn right. Take immediate right onto Bordertown-Burlington Road. Rivergate entrance will be on your left.

FROM POINT SOUTH OFF I-295: Take I-295 North to Exit 56 Fort Dix/Mcguire AFB. At the top of the exit ramp, turn left on Rising Sun Road. At the first traffic light, turn right on Hedding Road. Take Hedding Road .3 mile to Dunns Mill Road. Turn left on Dunns Mill Road. At the first traffic light and turn right. Take immediate right onto Bordertown-Burlington Road. Rivergate entrance will be on your left.

FROM THE NJ TURNPIKE: Take Exit 7 and follow signs for Route 206 North. At the first traffic light, turn left on Dunns Mill Road. At the first traffic light, turn left onto Route 130 South. Take Route 130 South to the first traffic light and turn right. Take immediate right onto Bordertown-Burlington Road. Rivergate entrance will be on your left.



- 1 Old York Country Club
- 2 Crystal Lake Park
- 3 Kuser Farm Park
- 4 Grounds For Sculpture
- 5 Bordertown City Retail (downtown)
- 6 The Shoppes at Hamilton
- 7 Bordertown Regional High School
- 8 Bordertown Regional Middle School
- 9 Robert Wood Johnson University Hospital
- 10 Bordertown Train Station River Line
- 11 Hamilton Marketplace
- 12 Princeton University (not on the map)

LEASING OFFICE:
500 Bluff View Circle
Bordertown, NJ 08505

PHONE:
609.298.0303
RIVERGATEBORDERTOWN.COM